

WATER REQUIREMENT

WATER REQUIREMENT AT  
-FIELD ELEVATION  
-WITHIN 30m OF FIELD  
-DOWNSTREAM OF  
BACKFLOW  
IS 386 l/min @ 6.09 Bars

IRRIGATION LEGEND

- PRODUCT DESCRIPTION  
● HUNTER I40-04-SS-ON-B-XX-I40-06-SS-ON-B-XX NOZZLE AS SHOWN  
● HUNTER I40-04-SS-B-XX-I40-06-SS-B-XX NOZZLE AS SHOWN  
NOZZLE PERFORMANCE:  
#20 @ 5.5 Bars - 84.7 l/min 20.1m RADIUS  
#44 @ 5.5 Bars - 96.6 l/min 20.4m RADIUS  
● HUNTER IC/IBV ELECTRIC CONTROL VALVE SIZE AS SHOWN  
● HUNTER HQ-44-XX-AW QUICK COUPLER VALVE (OPTIONAL)  
● HUNTER IC-1800-M SOLID STATE METAL CABINET CONTROLLER  
● HUNTER SOLAR-SYNC-SEN ON SITE WEATHER SENSOR  
[M] WATER METER MINIMUM SIZE @ 386 l/min IS 63mm  
[BP] BACKFLOW PREVENTER SIZED TO SYSTEM l/min  
--- MAINLINE PIPE  
- LATERAL PIPE  
- SLEEVING  
⊗ ISOLATION VALVE LINE SIZED

IRRIGATION NOTES

1. SPRINKLER LOCATIONS ARE TO SCALE
2. PIPE LOCATIONS ARE DIAGRAMATIC
3. ALL SPRINKLERS TO BE INSTALLED ON 32mm SCH 80 SWING JOINTS
4. ALL COMPONENTS TO BE INSTALLED AS PER MANUFACTURERS RECOMMENDATIONS
5. MAINLINE DEPTH TO BE NO LESS THAN 460mm
6. LATERAL DEPTH TO BE NO LESS THAN 410mm
7. ELECTRIC CONTROL VALVES TO BE COVERED WITH 12" VALVE BOX
8. LOCATE VALVES/OCV'S OUT OF HIGH TRAFFIC AREAS
9. WIRE SPLICE CONNECTIONS TO BE WATERPROOF
10. OCV TO BE LOCATED IN 10" VALVE BOX
11. ALL SLEEVES TO BE 2X PIPE RUN THROUGH THEM
12. INSTALL ALL COMPONENTS AS PER LOCAL, STATE, FEDERAL CODES
13. REFER TO HUNTER INSTALLATION DETAILS
14. REFER TO HUNTER CATALOG FOR PERFORMANCE SPECIFICATIONS
15. ADD HUNTER "FS" FOR DIRTY WATER VALVE
16. ADD HUNTER "AS" FOR PRESSURE REGULATED VALVE

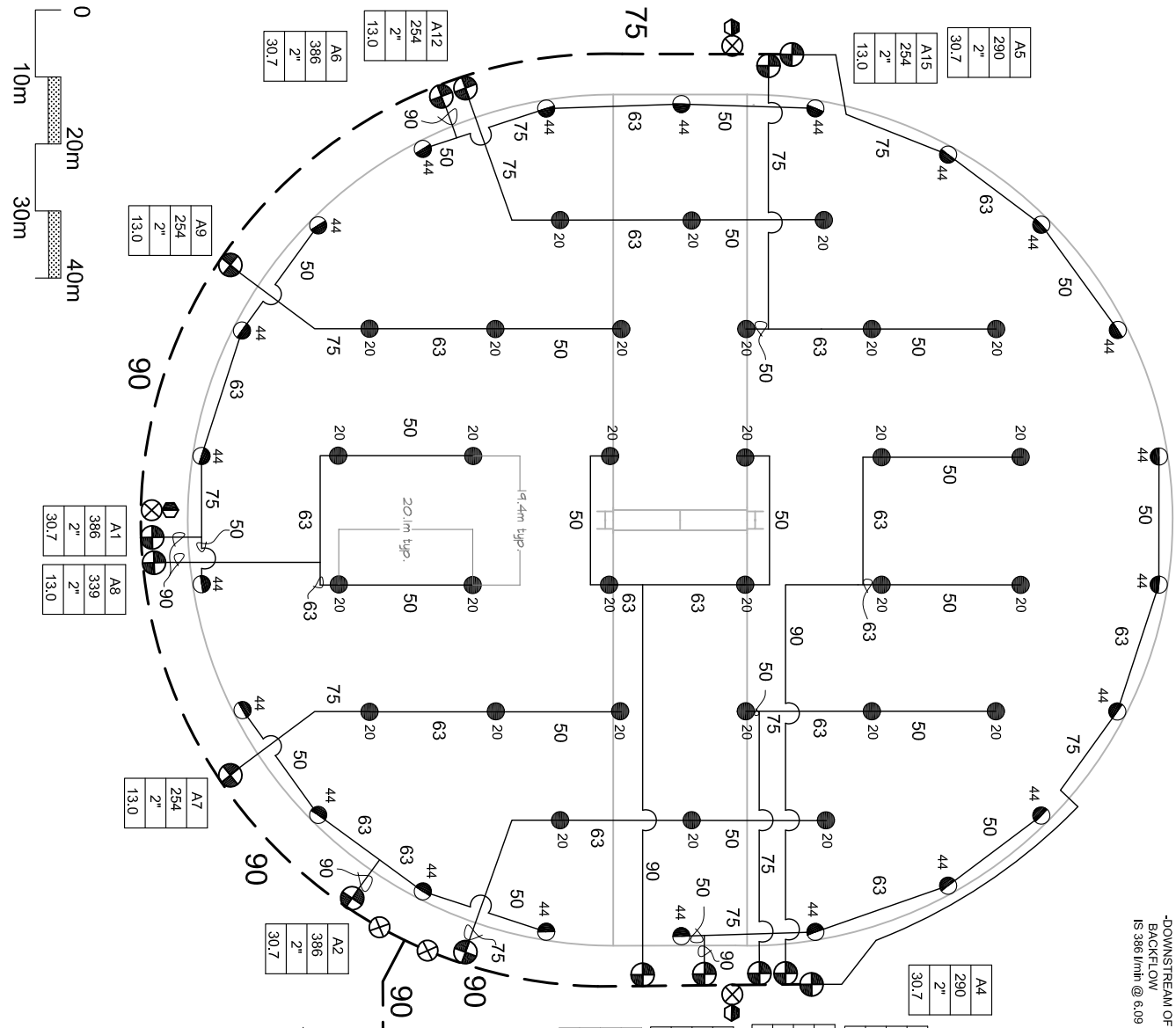


VALVE ID GUIDE

A1	STATION NUMBER
273	386
1.5"	2"
19	PRECIPITATION RATE mm/hr

SYSTEM PERFORMANCE DATA

ZONE	SIZE	FLOW m <sup>3</sup> /hr	PR mm/hr	DU	SC (10% WINDOWN)
A1	2"	23.2	386	30.7	.81
A2	2"	23.2	386	30.7	.81
A3	2"	23.2	386	30.7	.81
A4	2"	17.4	290	30.7	.81
A5	2"	17.4	290	30.7	.81
A6	2"	23.2	386	30.7	.81
A7	2"	15.2	254	13.0	.84
A8	2"	20.3	339	13.0	.84
A9	2"	15.2	254	13.0	.84
A10	2"	20.3	339	13.0	.84
A11	2"	15.2	254	13.0	.84
A12	2"	15.2	254	13.0	.84
A13	2"	15.2	254	13.0	.84
A14	2"	20.3	339	13.0	.84
A15	2"	15.2	254	13.0	.84



CRICKET FIELD

I-40 EIGHT ROW DESIGN

Hunter®

Hunter Industries  
1940 Diamond Street  
San Marcos, California 92078  
SpecPro Technical Assistance  
1-800-319-4796  
www.HunterIndustries.com

SHEET

1 OF 1

Hunter Industries offers this plan as a general guide for estimating purposes and offers no warranty, expressed or implied, for projects installed from this plan. Because of the many variables of every system and of every site we recommend that a qualified irrigation designer be consulted.